

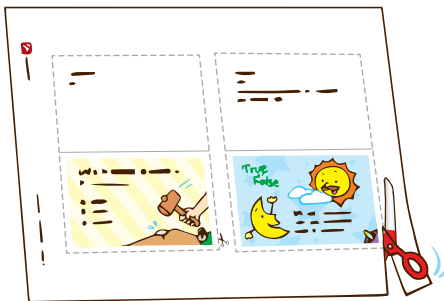


# TRIVIA

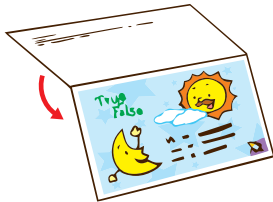
## • Questions •

**Challenge yourself with the trivia questions!  
Follow the steps below to start.**

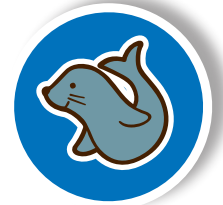
1 Cut.



2 Fold.



3 Play!





**Answer:**

false

Antarctica is one of the largest cold deserts. Its annual precipitation is very low.

**True  
or  
False**

All deserts are hot.



**Answer:**

No, they cannot.

They float like parachutes, but they cannot fly like birds.



Can flying squirrels actually fly?





**Answer:**

B. a lamp

Which of the following is not a source of natural light?

- A. the sun
- B. a lamp
- C. a firefly
- D. a star



**Answer:**

false

Some of them are planets, like Venus and Jupiter, and some are artificial satellites.

**True  
or  
False**

All the shining dots we see in the night sky are stars.





**Answer:**

C. on its front legs

Where would you find a cricket's ears?

- A. on its head
- B. on its chest
- C. on its front legs
- D. crickets do not have ears



**Answer:**

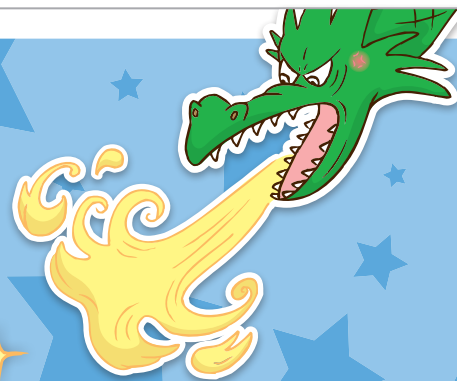
false

All minerals melt if the temperature and pressure are high enough. Diamonds melt at about 6,000°F.

**True  
or  
False**



A diamond never melts.





**Answer:**

C. 15 in

This huge snowflake landed in Montana,  
U.S. in 1887.

What is the diameter of the largest  
snowflake recorded?

A. 5 in

B. 10 in

C. 15 in



**Answer:**

A. 1.25 seconds

How long does it take for moonlight  
to reach Earth?

A. about 1.25 seconds

B. about 1.25 hours

C. about 1.25 days





**Answer:**

A. in Antarctica

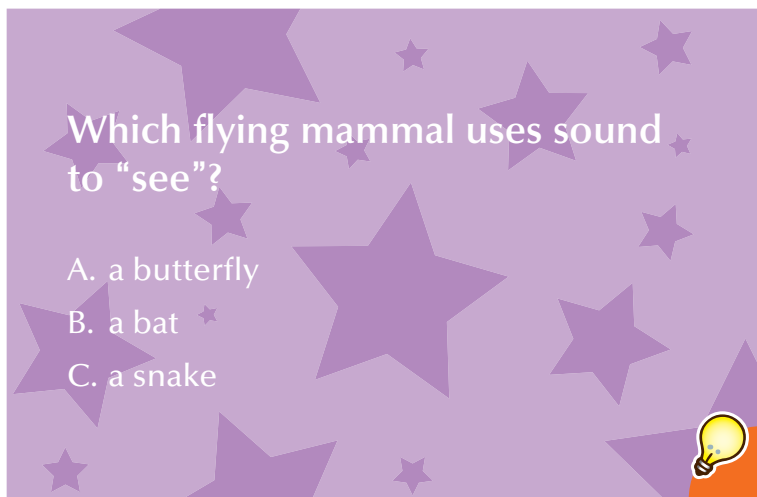
In Commonwealth Bay, Antarctica, winds over 150 mph are usual.



**Answer:**

B. a bat

A bat makes sounds and listens to the echoes that return to it to determine where objects are.





**Answer:**

B. a bird's nest

Which of the following does the exterior design of the Beijing National Stadium for the 2008 Olympics resemble?

- A. a house
- B. a bird's nest
- C. a beehive



**Answer:**

true

Spider silk is extremely lightweight.

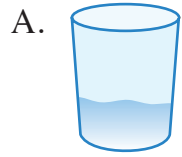
**True  
or  
False**

A strand of spider silk that is as long as the equator would weigh less than 18 oz, the weight of three apples.

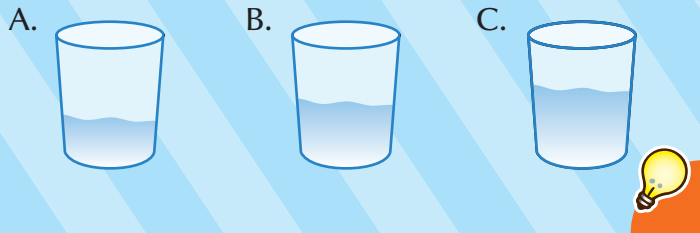




**Answer:**



If you clink each glass with a spoon, which one will give you the highest pitch?



**Answer:**

false

Female Asian elephants do not have tusks.

**True  
or  
False**

All adult elephants have tusks.







**Answer:**

B. light

The speed of light in a vacuum is about 186,000 miles per second.

**What is the fastest thing in the universe?**

- A. a space shuttle
- B. light
- C. a sports car



**Answer:**

the female lions

The males' main job is to protect the pride and their territory.

**In a pride of lions, who does more hunting, the females or the males?**





**Answer:**

B. 6 in

Heat expands and cooling contracts the materials of the tower.

The Eiffel Tower is taller in summer than in winter. How much taller does it get?

A. 2 in

B. 6 in

C. 35 in

D. 47 in



**Answer:**

false

No planets emit light. They only reflect light. Only stars, like the sun, emit light.

**True  
or  
False**

Some planets emit light and some reflect light.





**Answer:**

No, they do not.

Even with all those teeth, crocodiles swallow their food whole.

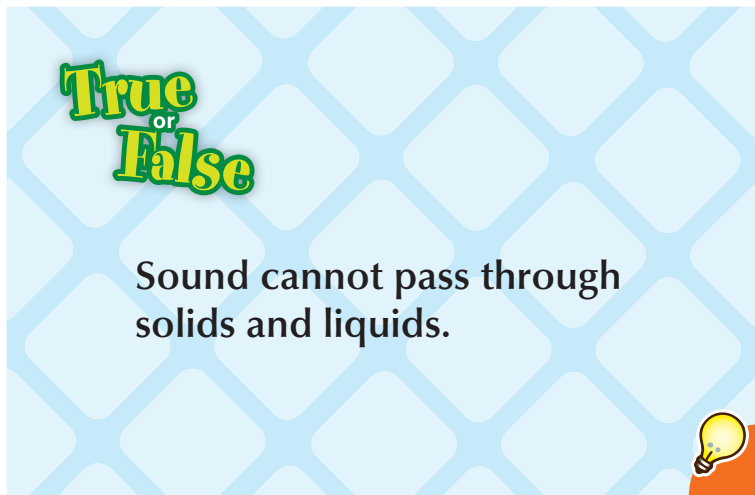


Do crocodiles chew their food?

**Answer:**

false

Sound can travel through solids and liquids.



**True**  
or  
**False**

Sound cannot pass through solids and liquids.



**Answer:**

D. salmon

Octopi and lobsters are invertebrates. Manta rays are considered vertebrates, but their skeletons are made of cartilage, not bones.

**Which of these animals has bones?**

- A. octopus
- B. manta ray
- C. lobster
- D. salmon



**Answer:**

Yes, it has.

In March of 1848, Niagara Falls dried up for 30 hours because large sheets of ice temporarily blocked the water channel.

**Has the water flow in Niagara Falls ever stopped before?**





**Answer:**

B. 88

The Empire State Building is 1,454 ft tall and had held the record as the tallest skyscraper in the world for 40 years.

About how many giraffes standing on top of one another have the same height as the Empire State Building?

- A. 18
- B. 88
- C. 880



**Answer:**

true

A shark's skeleton is made of cartilage, which is the same material that your nose and ears are made of.

**True**  
or  
**False**

Sharks do not have a single bone in their bodies.





**Answer:**

No, they do not.

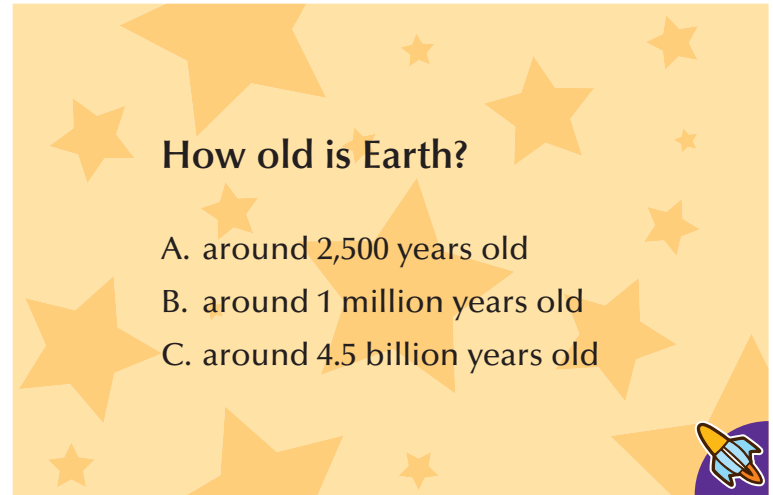


Do birds have teeth?



**Answer:**

C. around 4.5 billion years old



How old is Earth?

- A. around 2,500 years old
- B. around 1 million years old
- C. around 4.5 billion years old





**Answer:**

A. tigers

Which of the following animals have not been sent to space?

A. tigers

B. dogs

C. monkeys

D. rats



**Answer:**

A. dog

It is believed that dogs were first domesticated at least 13,000 years ago.

Which animal did people first domesticate?

A. dog

B. cat

C. cow

D. pig





**Answer:**

B. horse

Which animal has wide, flat teeth for munching on grass?

- A. lion
- C. goose

- B. horse
- D. snake



**Answer:**

Yes, there are.

Southern lights can be viewed near the South Pole.

There are northern lights. Are there southern lights?







**Answer:**

true

It is believed that the pyramid has been eroded by natural occurrences.

**True  
or  
False**

The height of the Great Pyramid of Giza has decreased by about 26 ft over the last 4,500 years.



**Answer:**

false

Salt can pass through a funnel, but salt is a solid.

**True  
or  
False**

Anything that can pass through a funnel is a liquid.





**Answer:**

false

Mars appears to be reddish because of the iron oxide in its soil.

**True  
or  
False**

Mars appears to be reddish because it is a very hot planet.



**Answer:**

A. nails

A toucan's beak is made of keratin, the same substance that our nails are made of. It is strong but light, which is good, because a toucan's beak is huge!

Which part of our bodies is made of the same material as a toucan's beak?

- A. nails
- B. teeth
- C. bones
- D. hair





**Answer:**

heat

What do you add to an ice pop  
to make it drinkable?



**Answer:**

A. Heat from inside Earth heats up the  
water.

Groundwater heated by Earth's interior  
rises to the surface to form hot springs.

Why is the water in a hot spring hot?

A. Heat from inside Earth heats up the  
water.

B. Water is boiled and gets poured into  
the spring.

C. The sun heats up the water in the  
spring.





**Answer:**

C. polar bear

Polar bears eat meat only.

Which of the following bears is not an omnivore?

A. panda bear

B. grizzly bear

C. polar bear

D. black bear



**Answer:**

true

Without oxygen, fire will burn out.

**True  
or  
False**

Like humans, fire needs oxygen.





**Answer:**

C. about the number of people on Earth  
A cup of soil can hold billions of bacteria.

How many bacteria can a cup of soil hold?

- A. about 100,000
- B. about the number of people in the United States
- C. about the number of people on Earth



**Answer:**

true

Both humans and giraffes have seven bones in their necks. Giraffes just have really, really big neck bones.

**True**  
or  
**False**

Humans and giraffes have the same number of bones in their necks.





**Answer:**

B. Light travels faster, so it will reach us before sound does.

**Why do we see lightning before we hear thunder?**

- A. Our eyes are in front of our ears.
- B. Light travels faster, so it will reach us before sound does.
- C. We are more sensitive to light than sound.



**Answer:**

A. coyote

**Which of these animals can change its diet and its behavior to survive in a wide range of habitats?**

- A. coyote
- B. flamingo
- C. dolphin
- D. snowshoe hare





**Answer:**

B. a snowflake

Which of these natural structures commonly has six sides?

- A. a spiderweb
- B. a snowflake
- C. a bird's nest
- D. a lily pad



**Answer:**

false

Pumice, a very light rock formed from volcanic activity, floats. Air is trapped in the many bubbles in the rock so it can float in water.

**True  
or  
False**

All rocks sink in rivers.

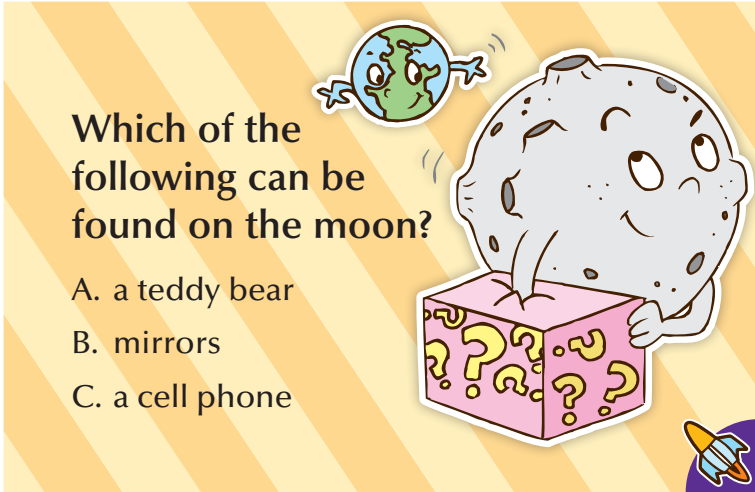




**Answer:**

B. mirrors

Mirrors were left on the moon to reflect light so that the distance between Earth and the moon can be measured.



**Answer:**

false

You weigh lighter on the moon and heavier on Jupiter due to the different gravitational forces.







**Answer:**

B. zippers

Zippers fasten jackets.

Paper is to paper clips as jackets  
are to...

- A. pockets
- B. zippers
- C. collars



**Answer:**

false

Sea otters do not have blubber, but they do have a dense, thick coat of fur that keeps them warm and buoyant.

**True  
or  
False**

All marine mammals have a layer  
of blubber to keep them warm.

