

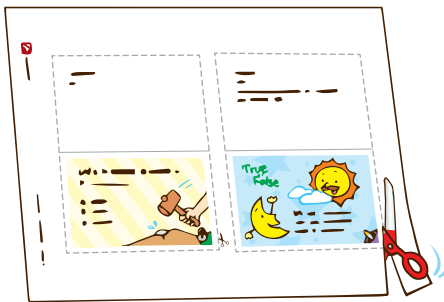


# TRIVIA

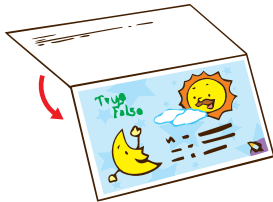
## • Questions •

**Challenge yourself with the trivia questions!  
Follow the steps below to start.**

1 Cut.



2 Fold.



3 Play!





**Answer:**

false

For example, jellyfish do not have brains. They have nerves in their skin but no central nervous system.

**True  
or  
False**

All animals have brains.



**Answer:**

B. 8 minutes

About how long does it take for sunlight to reach Earth?

- A. 8 seconds
- B. 8 minutes
- C. 8 days





**Answer:**

false

The air we exhale is warmer than the cold outside air. The cold air cools the exhaled air rapidly and mist, which looks like steam, is formed.

**True  
or  
False**

We see what looks like steam when we breathe outdoors in cold weather because our bodies produce hot steam to keep us warm.



**Answer:**

false

A camel's hump stores fat. If a camel's fat were distributed all over its body like human fat, the camel would get too hot and would sweat out its water.

**True  
or  
False**

A camel's hump stores water.





**Answer:**

false

A bolt of lightning can be five times hotter than the surface of the sun.

**True**  
or  
**False**

The sun is hotter than a bolt of lightning.



**Answer:**

B. teeth

The enamel that covers your teeth is the hardest substance in your body.

Where do you find the hardest substance in your body?

- A. fingernails
- B. teeth
- C. bones





**Answer:**

B. copper

The statue's copper coating turned green due to the chemical reaction of the copper with the oxygen in the air.

The Statue of Liberty turned green due to a chemical change. What was its original color?

- A. yellow
- B. copper
- C. silver



**Answer:**

true

The Great Wall of China stretches over 13,170 miles across mountains and deserts.

**True**  
or  
**False**

The longest human-made structure is the Great Wall of China.





**Answer:**

false

Natural gas is odorless. A chemical is added to it to make it smell like rotten eggs so that we can easily detect gas leaks to prevent fires or explosions.

**True**  
or  
**False**

Natural gas smells like rotten eggs because that is where it comes from.



**Answer:**

B. Mercury

Which planet is closest in size to our moon?

- A. Jupiter
- B. Mercury
- C. Saturn





**Answer:**

false

Unlike soil on Earth, lunar soil does not contain any air, water, or organic matter.

**True  
or  
False**

Lunar soil is the same as the soil on Earth.



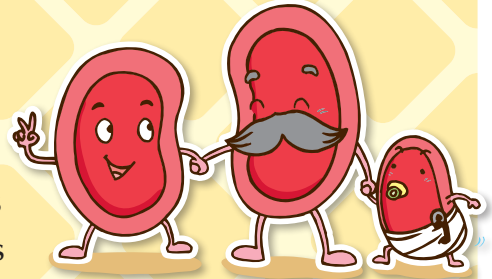
**Answer:**

D. four months

But don't worry, because your bones are constantly making new red blood cells to replace them.

About how long do our red blood cells live?

- A. two years
- B. one day
- C. three weeks
- D. four months





**Answer:**

B. 42 years

The Eiffel Tower was the tallest structure in the world. How long did it hold this record?

A. 10 months

B. 42 years

C. 106 years

D. 215 years



**Answer:**

A. a giant storm

This giant storm has lasted for hundreds of years.

What is the red spot on Jupiter?

A. a giant storm

B. a volcano

C. a giant ruby

D. a fire







**Answer:**

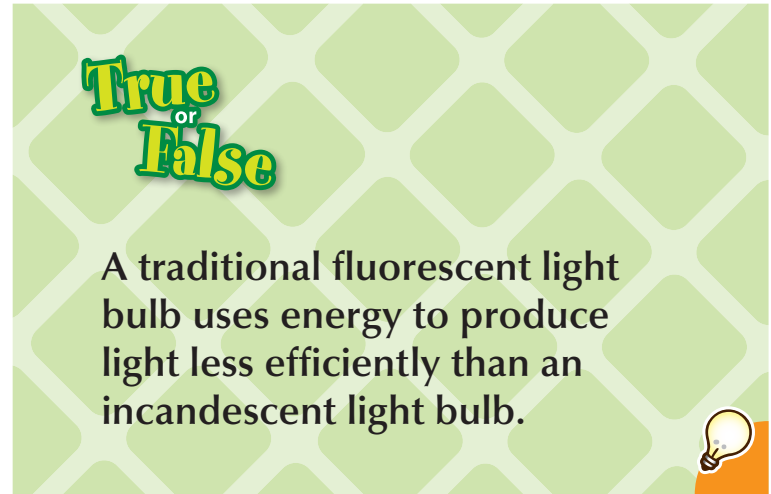
false

You can never sneeze with your eyes open.



**Answer:**

false





**Answer:**

C. dark brown soil

The darker the soil is, the more organic matter it contains.

Which soil contains the most organic matter?

- A. light gray soil
- B. yellow soil
- C. dark brown soil



**Answer:**

true

This may be hard to fathom, especially when the circumference of Earth is 24,901 miles.

**True**  
or  
**False**

You have over 60,000 miles of blood vessels in your body.





**Answer:**

D. hip

This largest muscle in the hip area is called the gluteus maximus.

Where is the largest muscle in your body?

- A. leg
- B. chest
- C. arm
- D. hip



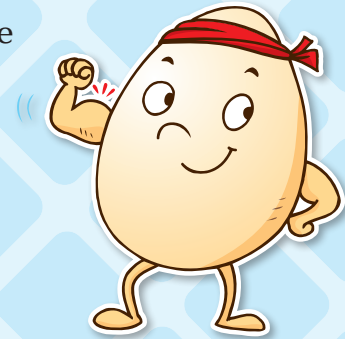
**Answer:**

A. its dome shape

The dome shape distributes a force exerted at the top of the eggshell to all parts of the eggshell evenly.

What makes an eggshell so strong?

- A. its dome shape
- B. its egg white
- C. its material





**Answer:**

B. 95

**Our Earth has one moon.  
How many moons does  
Jupiter have?**

- A. 3
- B. 95
- C. 600



**Answer:**

D. liver

Skin is the heaviest organ of a human body, but it is not an internal organ.

**What is the heaviest internal  
organ in your body?**

- A. heart
- B. skin
- C. brain
- D. liver

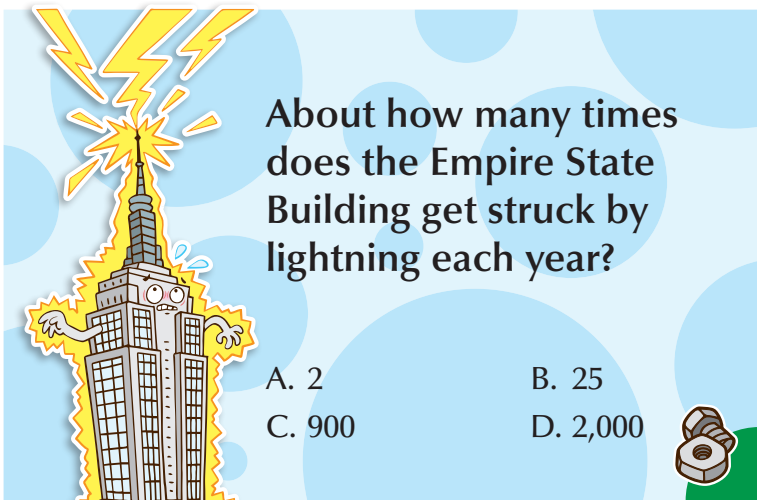




**Answer:**


B. 25

The Empire State Building gets struck a lot more often than other structures due to its height and the lightning rod at the top.



About how many times does the Empire State Building get struck by lightning each year?

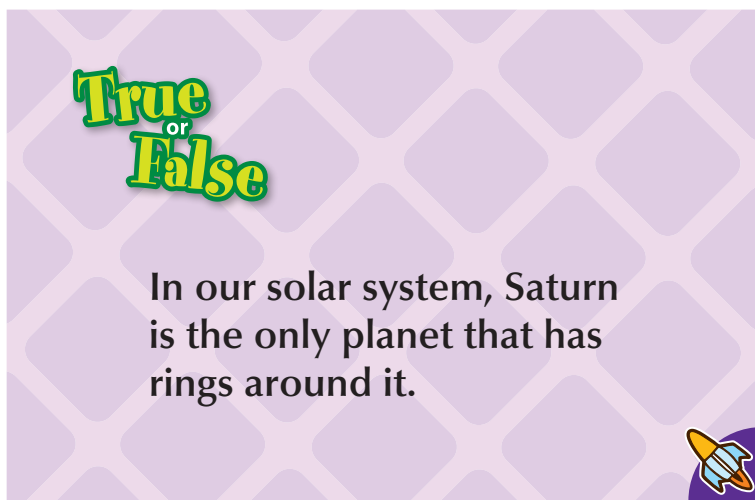
A. 2                      B. 25  
C. 900                    D. 2,000



**Answer:**


false

Jupiter, Uranus, and Neptune also have rings, but they are not as spectacular as those of Saturn.



**True**  
or  
**False**

In our solar system, Saturn is the only planet that has rings around it.





**Answer:**

true

Trees are the tallest type of plant. The tallest tree in the world on record is located in California, U.S. It is a little over 380 ft, which is as tall as a 35-story building.

**True  
or  
False**

There are trees that are taller than a 15-story building.



**Answer:**

B. the sun

The moon is the nearest, but it is not a star, and the North Star is not in our solar system.

Which is the nearest star to Earth?

- A. the North Star
- B. the sun
- C. the moon





**Answer:**

B. 134°F

This temperature was recorded in Death Valley, California, U.S. in 1913.

What is the hottest temperature recorded in the world?

- A. 86°F
- B. 134°F
- C. 140°F



**Answer:**

false

Though most cells are microscopic, some cells can be seen with the naked eye. For example, an egg's yolk is a large single cell.

**True  
or  
False**

No cells can be viewed without a microscope.





**Answer:**

B. a blue star

A star with a temperature of about 45,000°F appears to be blue, a star at 10,000°F appears yellow, and one at 5,500°F appears red.

**Which star is the hottest?**

- A. a yellow star
- B. a blue star
- C. a red star



**Answer:**

C. ear

This bone in the human body is called the stapes or stirrup, and it is in the middle ear.

**Where do you find the smallest bone in your body?**

- A. toe
- B. jaw
- C. ear
- D. finger







**Answer:**

false

No planets emit light. They only reflect light. Only stars, like our sun, emit light.

**True**  
or  
**False**

Some planets emit light and some reflect light.



**Answer:**

false

Some of them are planets, like Venus and Jupiter, and some are satellites.

**True**  
or  
**False**

All the shining dots we see in the night sky are stars.





**Answer:**

true

There are 206 bones in an adult human's body and about 300 in a baby's body. As kids get older, some of their bones fuse together.

**True**  
or  
**False**

Kids have more bones in their bodies than adults.



**Answer:**

false

Mars appears to be reddish because of the iron oxide in its soil.

**True**  
or  
**False**

Mars appears to be reddish because it is a very hot planet.





**Answer:**

A. Lake Pontchartrain Causeway

This bridge in the U.S. is 24 mi long and connects Metairie with Mandeville, Louisiana.

Which of the following is the longest bridge in North America?

- A. Lake Pontchartrain Causeway
- B. Golden Gate Bridge
- C. Confederation Bridge



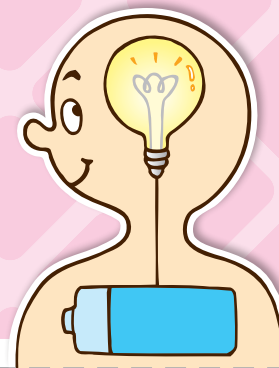
**Answer:**

C. 20%

Though your brain accounts for about 2% of your body weight, it uses 20% of your energy.

About how much of your body's energy does your brain consume?

- A. 5%
- B. 50%
- C. 20%
- D. 75%





**Answer:**

C. on its front legs

Where would you find a cricket's ears?

- A. on its head
- B. on its chest
- C. on its front legs
- D. crickets have no ears



**Answer:**

false

The Jeddah Port Control Tower in Saudi Arabia, which measures 436 ft, is the world's tallest lighthouse.

**True  
or  
False**

The tallest lighthouse is in the United States.





**Answer:**

A. pale blue

Oxygen condenses into a pale blue liquid at  $-297^{\circ}\text{F}$ .

Oxygen condenses into liquid if it is cold enough. What color is its liquid form?

- A. pale blue
- B. white
- C. light brown



**Answer:**

true

**True**  
or  
**False**



Earth is older than the moon.





**Answer:**

true

This substance is calcium.

**True  
or  
False**

The primary substance that makes up an eggshell can also be found in human teeth.



**Answer:**

C. in water

Sound travels faster in water than in air and it cannot travel in space because there is no air.

**Where does sound travel fastest?**

- A. in air
- B. in space
- C. in water





**Answer:**

B. 12 minutes

The AT&T Stadium in Texas, U.S. has a fully retractable roof. How long does it take to open this roof?

- A. 2 seconds
- B. 12 minutes
- C. 2 hours



**Answer:**

false

All planets in our solar system have moons except Mercury and Venus.

**True  
or  
False**

Most planets in the solar system have no moons.





**Answer:**

C. several trillion

There are over 1,000 species of bacteria living all over your skin. Don't worry, though. Most of them are harmless, and some even help you by protecting you against bad bacteria.

How many living organisms are there on the surface of your skin?

- A. none
- B. several thousand
- C. several trillion



**Answer:**

false

Both the sun and the moon rise in the east and set in the west.

**True  
or  
False**

The sun rises in the east and the moon rises in the west.







**Answer:**

false

Only intense heat can destroy a diamond.



**Answer:**

No, they cannot.

They can float like parachutes, but they cannot fly like birds.

