

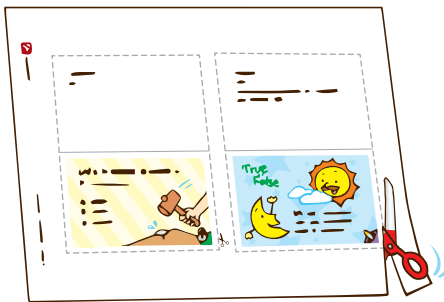


TRIVIA

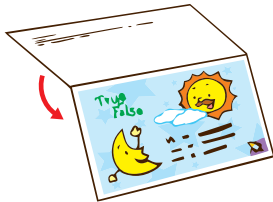
• Questions •

**Challenge yourself with the trivia questions!
Follow the steps below to start.**

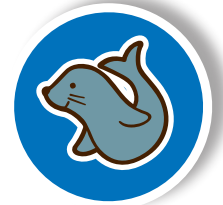
1 Cut.



2 Fold.



3 Play!





Answer:

B. a harmonica and bells

In December 1965, American astronauts played Jingle Bells in outer space using musical instruments. What did they use?

- A. a piano
- B. a harmonica and bells
- C. a cello and a violin

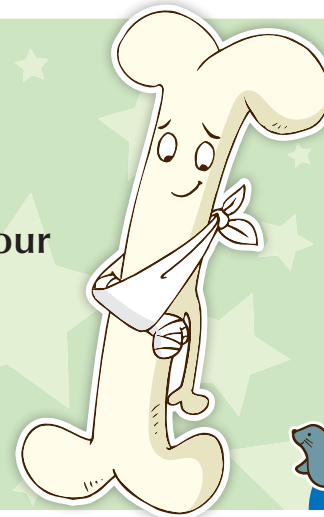


Answer:

No, you cannot.

Your funny bone is not a bone at all, but a large nerve in your arm.

Can you break your funny bone?





Answer:

the ocean biome

The world's oceans make up more than 70% of Earth's surface and are home to many species.

What is the largest biome in the world?



Answer:

false

The center of a beehive stays between 91°F and 95°F, regardless of whether the outside temperature is scorching hot or freezing cold.

**True
or
False**

The temperature at the center of a beehive varies depending on the outside temperature.





Answer:

B. its antlers

Which body part of a moose has the fastest growing animal cell on Earth?

- A. its ears
- B. its antlers
- C. its legs
- D. its teeth



Answer:

false

Great Bear Lake is the largest lake in Canada, but not in the world. The largest lake in the world is the Caspian Sea, located near Russia and the eastern edges of Europe.

**True
or
False**



Great Bear Lake is the largest lake in the world.





Answer:

C. over 5,000

Over 5,000 types of minerals have been found so far and the list is still growing.

How many types of minerals are there on Earth?

- A. about 30
- B. about 300
- C. over 5,000



Answer:

true

Camels have an upper and lower eyelid like humans do, but they also have a third eyelid. This eyelid is very thin so that a camel can see clearly during sandstorms even with it closed.

**True
or
False**

Camels have three eyelids on each eye.

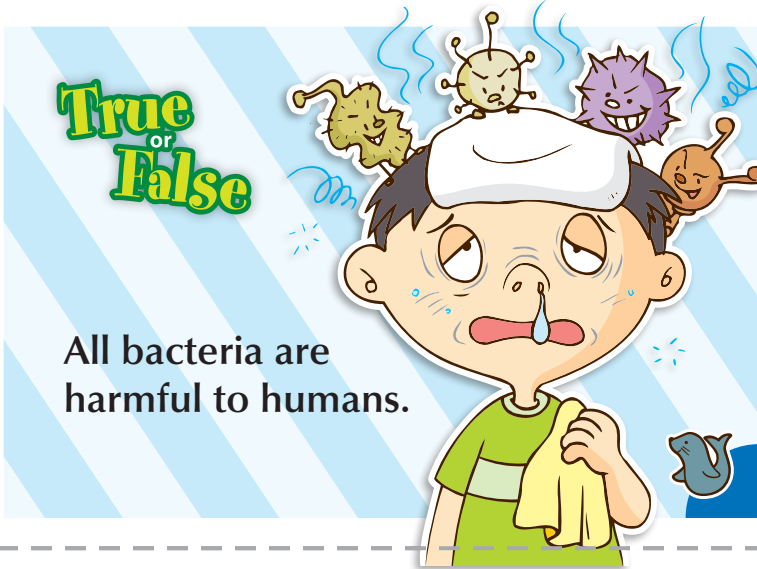




Answer:

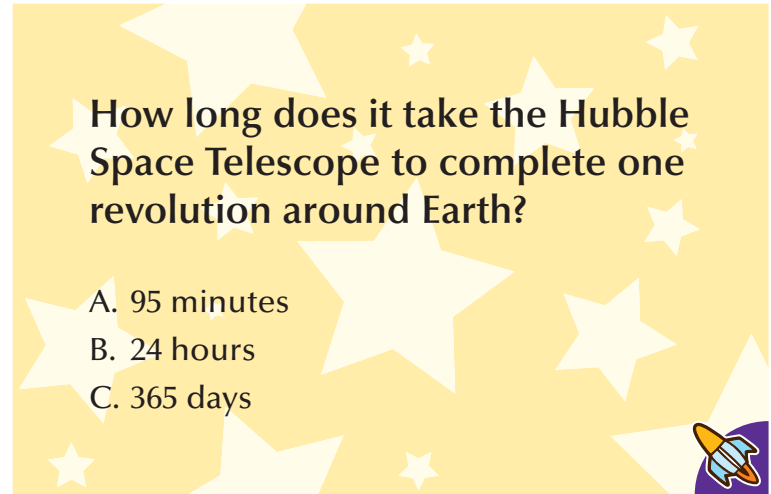
false

Some bacteria help us digest food and some help us keep bad bacteria from getting into our bodies.



Answer:

A. 95 minutes





Answer:

B. reindeer skins

Reindeer skins help trap the hotel guests' body heat.

Beds are made from packed ice and snow in Sweden's ice hotel. What are they topped with to provide extra comfort for hotel guests?

- A. tree branches and grass
- B. reindeer skins
- C. sand and rocks



Answer:

false

The actual rate of erosion is only 1 inch over 10,000 years. This is because the faces are made of smooth, fine-grained granite, which is very durable.

**True
or
False**

The faces of Mount Rushmore are eroding at an alarming rate due to natural occurrences.





Answer:

A. lever

Steering wheels were not widely used until the early 1900s.

The first car did not have steering wheels. What did drivers use to steer instead?

- A. lever
- B. wedge
- C. screwdriver



Answer:

B. a warning

A skunk's distinctive pattern and bold coloring let potential predators know that they should not get too close.

What do predators consider a skunk's black and white coloring to be?

- A. a camouflage
- B. a warning
- C. a greeting





Answer:

true

The tail always points away from the sun because of solar wind.

**True
or
False**

The tail of a comet always points away from the sun.



Answer:

Yes, copper is a conductor.

Copper is known for its reddish-brown color. Is copper a conductor?





Answer:

false

The Empire State Building's flexibility helps maintain its stability on windy days. Otherwise, the building would get pushed over or snap during high winds.

**True
or
False**

The Empire State Building is made of very strong materials so it never moves even in strong winds.



Answer:

C. 243 days

Venus has the longest days out of any planet in our solar system. How many Earth days are in one Venus day?

- A. 7 days
- B. 31 days
- C. 243 days
- D. 315 days





Answer:

B. larger than a chicken egg

A kiwi bird egg is six times the size of a large chicken egg.

A kiwi bird is about the size of a domestic chicken. How big is a kiwi bird egg?

- A. about the size of a chicken egg
- B. larger than a chicken egg
- C. smaller than a chicken egg



Answer:

false

Dew forms on grass because moisture in the air condenses in the colder temperatures of the early morning.

True
or
False

Dew forms on grass in the morning because grass sweats like humans during the night.





Answer:

B. the United States

Mauna Loa in Hawaii, U.S. is the biggest active volcano in the world.

Where can you find the biggest active volcano in the world?

- A. China
- B. the United States
- C. England
- D. Canada



Answer:

A. Jupiter

Your weight on Jupiter is about 2.36 times your weight on Earth.

On which planet in the solar system will you be the heaviest?

- A. Jupiter
- B. Venus
- C. Mercury
- D. Mars





Answer:

No, it cannot.

An owl can move its head 270° . Since an owl cannot move its eyes within its sockets like humans can, it must move its entire head to see what is around it.

Can an owl move its head in a full circle?



Answer:

false

Helium is the second lightest gas. The lightest gas is hydrogen, but since it is highly flammable, it is not used in balloons.

**True
or
False**

Helium is used in balloons to make them float in the air so helium is the lightest gas.





Answer:

B. ice and rocks

They are made up of mostly ice particles and some rock particles ranging in size from a grain of sugar to the size of a mountain.

What are Saturn's rings made up of?

- A. steam
- B. ice and rocks
- C. gas and metals



Answer:

A. kiwi bird

The position of a kiwi bird's nostrils allows the kiwi bird to easily smell prey that is underground or close to the ground, such as worms and insects.

Almost all birds have nostrils at the tops of their beaks. But there is one species whose nostrils are at the end of its beak. Which one is it?

- A. kiwi bird
- B. bald eagle
- C. barn owl
- D. ostrich





Answer:

C. Jupiter

This moon is called Ganymede. It is even larger than Mercury.

Which planet has the biggest moon in the solar system?

- A. Earth
- B. Mars
- C. Jupiter



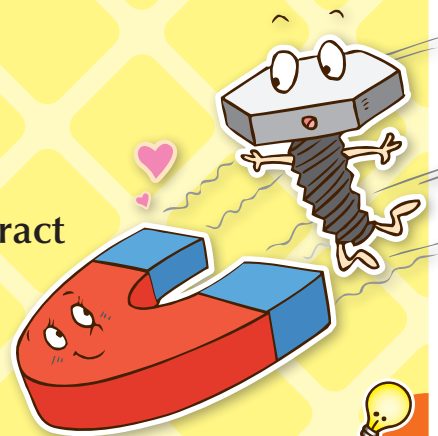
Answer:

false

Aluminum is nonmagnetic. This is why you cannot attract a piece of aluminum foil to a refrigerator magnet.

**True
or
False**

Magnets can attract anything that is made of metal.





Answer:

A. 25,000 mph

At that speed, you could travel from Chicago to Seattle in 5 minutes!

About how fast does a rocket need to travel to overcome Earth's gravity?

- A. 25,000 mph
- B. 20,000 mph
- C. 9,000 mph
- D. 1,000 mph



Answer:

false

Some spiders, such as the Goliath birdeater spider, do not weave webs.

**True
or
False**

All spiders weave webs.





Answer:

true

The densest element is osmium. Its density is about 1.2 times that of gold.

**True
or
False**

The densest element on Earth
is a metal.



Answer:

D. 290

How many moons are there in the
solar system?

- A. 1
- B. 64
- C. 128
- D. 290





Answer:

B. polar bear

Not all animals have pink tongues.
Which of these animals has a blue tongue?

- A. big-horned sheep
- B. polar bear
- C. tiger
- D. bison



Answer:

false

Its height has decreased by 26 ft due to erosion.

**True
or
False**

The height of the Great Pyramid of Giza has stayed the same since it was built 4,500 years ago.





Answer:

C. about 8 minutes

It takes about 8 minutes for sunlight to reach Earth.

If the sun suddenly stopped shining, how long would it take us to realize it?

- A. right away
- B. about 10 seconds
- C. about 8 minutes
- D. about an hour



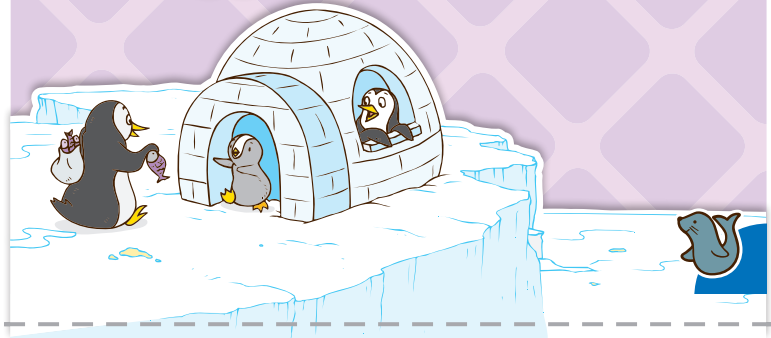
Answer:

false

Only a few species of penguins live in the Antarctic. Many of them live in warmer places in the southern hemisphere and one species even lives close to the equator.

**True
or
False**

All penguins live in the Antarctic.





Answer:

false

Deserts are defined by their lack of precipitation, not their temperature. In fact, almost the entire continent of Antarctica is considered a desert.

**True
or
False**

All deserts are hot.



Answer:

C. 300

The number of dimples on a golf ball can vary; however, no matter how many there are, their purpose is to allow the golf ball to travel farther.

About how many dimples are there on a golf ball?

- A. 50
- B. 100
- C. 300
- D. 800





Answer:

C. to gnaw

Rodents have front upper and lower teeth that grow continuously, so they must keep their teeth short by gnawing.

The word “rodent” comes from the Latin word “rodere.” What does “rodere” mean?

- A. small mammal
- B. long tail
- C. to gnaw
- D. to dig



Answer:

true

Spider silk is five times stronger than steel.

True
or
False

Spider silk is stronger than steel of the same diameter.





Answer:

A. less than 1%

97% of the world's water is saline (salty) water, which is not drinkable. Furthermore, not all fresh water is available for use. Drinkable water comes from rivers, freshwater lakes, and underground.

Of all the water in the world, how much water is drinkable?

- A. less than 1%
- B. about 30%
- C. about 70%



Answer:

false

Porcupines cannot throw their quills, but their quills are easily detached from their bodies so that they stick onto predators.

**True
or
False**

Porcupines throw their quills.





Answer:

B. oxygen

What does a firefly need to stimulate the chemical reaction in its body that gives off light?

- A. water
- B. oxygen
- C. carbon dioxide
- D. electricity



Answer:

B. 3

The constellation Orion has a “belt.” How many bright stars make up this belt?

- A. 1
- B. 3
- C. 10





Answer:

false

Both salt and sugar can lower the melting point of ice and make ice melt faster.



Salt makes ice melt faster and sugar makes it melt slower.

Answer:

C. There would not be any living things on Earth.

Earth's atmosphere helps maintain a favorable temperature for living things. Without the atmosphere, no living thing can survive.

What would happen if there was no atmosphere on Earth?

- A. The air would be fresher.
- B. There would be more meteorite hits.
- C. There would not be any living things on Earth.





Answer:

false

Although it is true that sunlight cannot reach the depths of the ocean, many deep ocean creatures, like the deep-sea anglerfish, produce their own light to attract prey.

**True
or
False**

Sunlight cannot reach very deep into the ocean, so there is no light there.



Answer:

C. a forest often blanketed by a low cloud cover

What is a cloud forest?

- A. a large group of clouds in the sky
- B. a cloud that looks like a forest
- C. a forest often blanketed by a low cloud cover
- D. a forest on a mountain

